

Robust & lightweight, 22ltr Sump Capacity and 55kg Load

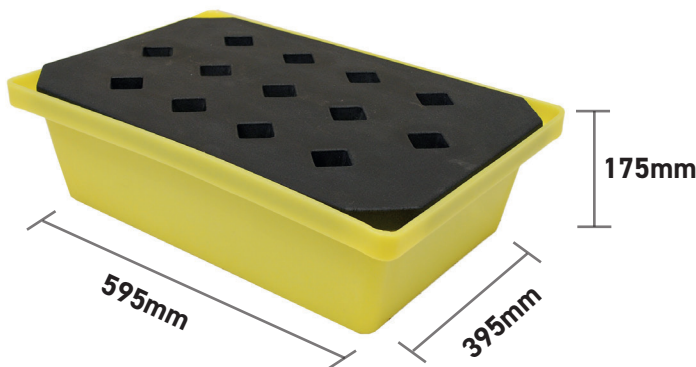
DESCRIPTION

- Manufactured from medium density polyethylene
- Sump capacity of 22ltr
- 1 x removable plastic grid included
- Broad range chemical compatibility
- Manufactured in the UK




SPECIFICATIONS

CODE	ST20
HEIGHT	175mm
LENGTH	595mm
WIDTH	395mm
SUMP CAPACITY	22ltr
COLOUR	Yellow
TARE WEIGHT	4kg
UDL	55kg



FEATURES AND BENEFITS



- 100% polyethylene for chemical compatibility
- Removable plastic grid for easy clean-up
- Lightweight & robust
- Ideal for good housekeeping of small containers
-  UV stabilised

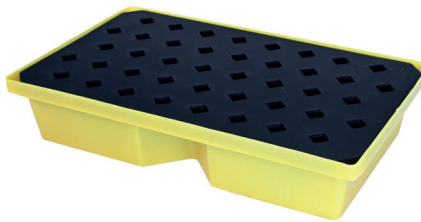


OTHER MODELS AVAILABLE

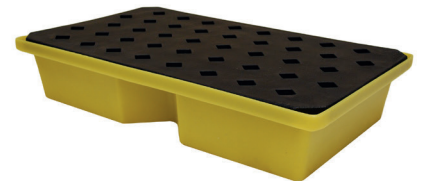
ST30



ST40



ST60



ST66



ST66WH



ST66BASE



OTHER MODELS AVAILABLE

ST70



ST70BASE



ST100



FULL ST RANGE

CODE	SUMP	LENGTH	WIDTH	HEIGHT	WEIGHT
ST20	22ltr	595mm	395mm	175mm	4kg
ST20BASE	22ltr	595mm	395mm	175mm	4kg
ST30	31ltr	805mm	405mm	170mm	5kg
ST30BASE	31ltr	805mm	405mm	170mm	5kg
ST40	43ltr	800mm	605mm	170mm	7.5kg
ST40BASE	43ltr	800mm	605mm	170mm	7.5kg
ST60	63ltr	1000mm	605mm	200mm	10kg
ST60BASE	63ltr	1000mm	605mm	200mm	10kg
ST66	66ltr	804mm	608mm	220mm	8.5kg
ST66WH	66ltr	933mm	608mm	938mm	13.5kg
ST66BASE	66ltr	804mm	608mm	220mm	8.5kg
ST70	70ltr	804mm	608mm	315mm	9.5kg
ST70BASE	70ltr	804mm	608mm	315mm	9.5kg
ST100	104ltr	1195mm	795mm	185mm	14kg
ST100BASE	104ltr	1195mm	795mm	185mm	14kg