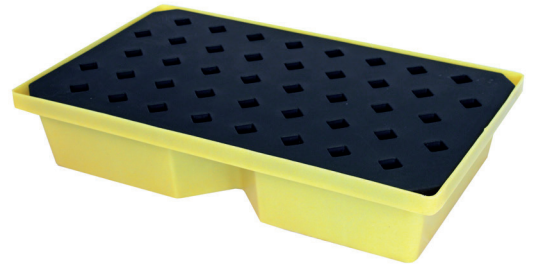


Lightweight & robust, 43ltr Sump Capacity and 105kg Load

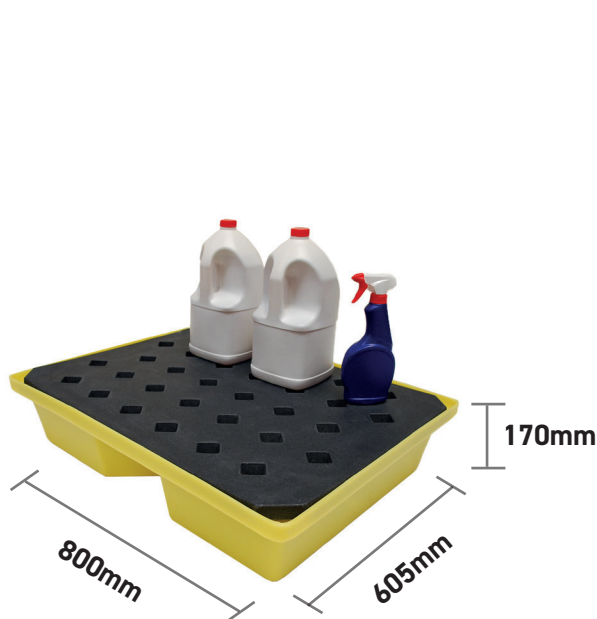
DESCRIPTION

- Manufactured from medium density polyethylene
- Sump capacity of 43ltr
- 1 x removable plastic grid included
- Broad range chemical compatibility
- Lightweight & robust drip tray
- Ideal for good housekeeping of small containers
- Manufactured in the UK



SPECIFICATIONS

CODE	ST40
HEIGHT (MM)	170
LENGTH (MM)	800
WIDTH (MM)	605
SUMP CAPACITY	43ltr
COLOUR	Yellow
TARE WEIGHT	7.5kg
UDL	105kg



FEATURES AND BENEFITS



- 100% polyethylene for chemical compatibility
- Removable plastic grid for easy clean-up
- Lightweight & robust
- Ideal for good housekeeping of small containers
- UV stabilised



OTHER MODELS AVAILABLE

ST20



ST30



ST60



ST66



ST66WH



ST66BASE



